

Grooved Fittings

Figures 501, 510, and 519

Patent Pending

Tyco Fire Products --- www.tyco-grooved.com
 451 North Cannon Avenue, Lansdale, Pennsylvania 19446 --- USA
 Customer Service/Sales: Tel: (215) 362-0700 / Fax: (215) 362-5385
 Technical Services: Tel: (800) 381-9312 / Fax: (800) 791-5500



Grooved Piping Products



General Description



Grooved fittings provide an economical and efficient method of changing direction, adding an outlet, reducing, or capping grooved piping systems. Figure 500 fittings are available in durable ductile iron.



Technical Data

Figure: 501, 510, 519

Sizes: 1 1/4" - 8"

Maximum Working Pressure:

300 psi; See specific data sheet for rating of coupling being used.

Approvals: UL, FM, and ULC

Note: See Fire Protection Submittal Sheet for exact Listing/Approval information.

Manufacture Source: Domestic

Material: Ductile iron, conforming to ASTM A-536 Grade 65-45-12

Protective Coatings:

- Non-lead orange paint
- Fire Brigade red (optional) non-lead
- Hot dipped galvanized conforming to ASTM A-153



Ordering Procedure

Ordering Information: When placing an order, indicate the full product name. Please specify the quantity, figure number and size.

Availability and Service: Grooved Piping Products, valves, accessories and other products are available throughout the U.S., Canada, and internationally, through a network of distribution centers. You may write directly or call 215-362-0700 for the distributor nearest you.



Care and Maintenance

The owner is responsible for the inspection, testing, and maintenance of their fire protection system and devices in accordance with the applicable standards of the National Fire Protection Association (e.g., NFPA 25), in addition to the standards of any authority having jurisdiction. The installing contractor or product manufacturer should be contacted relative to any questions. Any impairment must be immediately corrected.

It is recommended that automatic sprinkler systems be inspected, tested, and maintained by a qualified Inspection Service.



Limited Warranty

Products manufactured by Tyco Fire Products are warranted solely to the original Buyer for ten (10) years against defects in material and workmanship when paid for and properly installed and maintained under normal use and

service. This warranty will expire ten (10) years from date of shipment by Tyco Fire Products. No warranty is given for products or components manufactured by companies not affiliated by ownership with Tyco Fire Products or for products and components which have been subject to misuse, improper installation, corrosion, or which have not been installed, maintained, modified or repaired in accordance with applicable Standards of the National Fire Protection Association (NFPA), and/or the standards of any other Authorities Having Jurisdiction. Materials found by Tyco Fire Products to be defective shall be either repaired or replaced, at Tyco Fire Products' sole option. Tyco Fire Products neither assumes, nor authorizes any person to assume for it, any other obligation in connection with the sale of products or parts of products. Tyco Fire Products shall not be responsible for sprinkler system design errors or inaccurate or incomplete information supplied by Buyer or Buyer's representatives.

IN NO EVENT SHALL TYCO FIRE PRODUCTS BE LIABLE, IN CONTRACT, TORT, STRICT LIABILITY OR UNDER ANY OTHER LEGAL THEORY, FOR INCIDENTAL, INDIRECT, SPECIAL OR CONSEQUENTIAL DAMAGES, INCLUDING BUT NOT LIMITED TO LABOR CHARGES, REGARDLESS OF WHETHER TYCO FIRE PRODUCTS WAS INFORMED ABOUT THE POSSIBILITY OF SUCH DAMAGES, AND IN NO EVENT SHALL TYCO FIRE PRODUCTS' LIABILITY EXCEED AN AMOUNT EQUAL TO THE SALES PRICE.

THE FOREGOING WARRANTY IS MADE IN LIEU OF ANY AND ALL OTHER WARRANTIES EXPRESS OR IMPLIED, INCLUDING WARRANTIES OF MERCHANTABILITY AND FITNESS FOR A PARTICULAR PURPOSE.

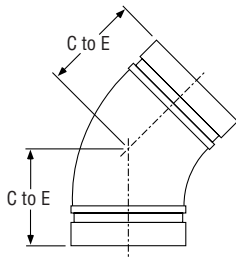


Figure 501

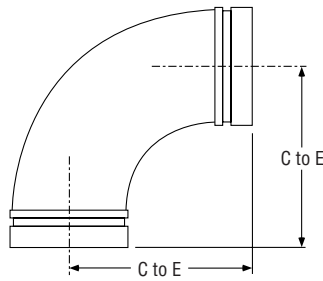


Figure 510

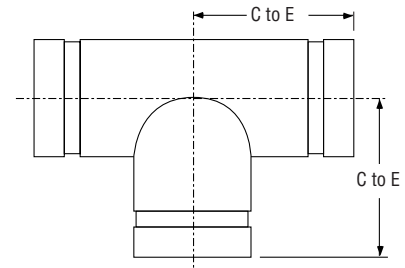


Figure 519

Nominal Size Inches	Figure 501 45° Elbow		Figure 510 90° Elbow		Figure 519 Tee	
	C to E Inches <i>mm</i>	Appx. Wt. Lbs. <i>Kg.</i>	C to E Inches <i>mm</i>	Appx. Wt. Lbs. <i>Kg.</i>	C to E Inches <i>mm</i>	Appx. Wt. Lbs. <i>Kg.</i>
1 ¹ / ₄	1.75 44.5	0.8 0.4	2.75 69.9	1.0 0.5	2.75 69.9	1.4 0.6
1 ¹ / ₂	1.75 44.5	1.0 0.5	2.75 69.9	1.4 0.6	2.75 69.9	1.8 0.8
2	2.00 50.8	1.3 0.6	3.25 82.6	1.8 0.8	3.25 82.6	2.6 1.2
2 ¹ / ₂	2.25 57.2	1.9 0.9	3.75 95.3	2.7 1.2	3.75 95.3	3.9 1.8
3	2.50 63.5	2.6 1.2	4.25 108.0	3.7 1.7	4.25 108.0	5.4 2.4
4	3.00 76.2	5.0 2.3	5.00 127.0	7.0 3.2	5.00 127.0	10.1 4.6
6	3.50 88.9	8.6 3.9	6.50 165.1	13.4 6.1	6.5 165.1	18.8 8.5
8	4.25 108.0	17.2 7.8	7.75 196.9	26.3 11.9	7.75 196.9	36.3 16.5

General Notes: It is the Designer's responsibility to select products suitable for the intended service and to ensure that pressure ratings and performance data is not exceeded. Always read and understand the installation instructions (IH-1000). Never remove any piping component nor correct or modify any piping deficiencies without first depressurizing and draining the system. Material and gasket selection should be verified to be compatible for the specific application.



Certified Company