

Mechanical Tees

Figure 730 Threaded / Grooved



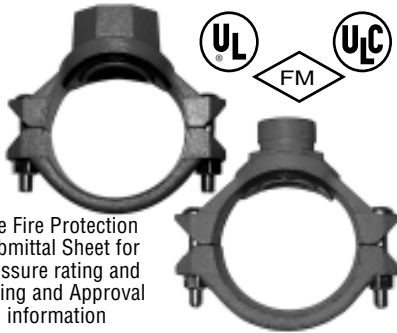
Grooved Piping Products

Tyco Fire Products --- www.tyco-grooved.com
 451 North Cannon Avenue, Lansdale, Pennsylvania 19446 --- USA
 Customer Service/Sales: Tel: (215) 362-0700 / Fax: (215) 362-5385
 Technical Services: Tel: (800) 381-9312 / Fax: (800) 791-5500



General Description

The Figure 730 Mechanical Tees may be used for any tee connection where a threaded or grooved outlet is needed. They may be converted into a cross when necessary.



See Fire Protection Submittal Sheet for pressure rating and Listing and Approval information



Technical Data

Figure: 730

Outlet: Threaded & Grooved

Max. Working Pressure:
300 psi (2068 kPa)

Note: Maximum pressure applies to the Mechanical Tee. When connected to a grooved coupling, the rating will be the lesser of the Mechanical Tee or Coupling rating. Maximum pressure is a total from all loads, based on standard weight or Sch. 10 steel pipe. For pipe with other wall thickness or materials contact Tyco Fire Products.

Approvals: UL, FM, and ULC;

See Fire Protection Submittal Sheet for exact Listing / Approval info.

Manufacturing Source: Domestic

Housing: Ductile iron conforming to ASTM A-536, Grade 65-45-12

Protective Coatings:

- Non-lead orange paint
- Hot dipped galvanized conforming to ASTM A-153

Bolt/Nuts: Track Head Bolts - conforming to ASTM A-183, Zinc Plated, (Min. Tensile = 110,000 psi)

Gasket: (specify when ordering)

- Grade E EPDM green color code

(See Gasket Grades and Recommendations Sheet for aid in selecting the proper gasket)



Ordering Information

Ordering Information: When placing an order, indicate the full product name. Please specify the quantity, figure number, type of gasket, EPDM "E", and size.

Availability and Service: Grooved Piping Products, valves, accessories and other products are available throughout the U.S., Canada, and internationally, through a network of distribution centers. You may write directly or call 215-362-0700 for the distributor nearest you.



Care and Maintenance

The owner is responsible for the inspection, testing, and maintenance of their fire protection system and devices in accordance with the applicable standards of the National Fire Protection Association (e.g., NFPA 25), in addition to the standards of any authority having jurisdiction. The installing contractor or product manufacturer should be contacted relative to any questions. Any impairment must be immediately corrected.

It is recommended that automatic sprinkler systems be inspected, tested, and maintained by a qualified Inspection Service.



Limited Warranty

Products manufactured by Tyco Fire Products are warranted solely to the original Buyer for ten (10) years against defects in material and workmanship

when paid for and properly installed and maintained under normal use and service. This warranty will expire ten (10) years from date of shipment by Tyco Fire Products. No warranty is given for products or components manufactured by companies not affiliated by ownership with Tyco Fire Products or for products and components which have been subject to misuse, improper installation, corrosion, or which have not been installed, maintained, modified or repaired in accordance with applicable Standards of the National Fire Protection Association (NFPA), and/or the standards of any other Authorities Having Jurisdiction. Materials found by Tyco Fire Products to be defective shall be either repaired or replaced, at Tyco Fire Products' sole option. Tyco Fire Products neither assumes, nor authorizes any person to assume for it, any other obligation in connection with the sale of products or parts of products. Tyco Fire Products shall not be responsible for sprinkler system design errors or inaccurate or incomplete information supplied by Buyer or Buyer's representatives. IN NO EVENT SHALL TYCO FIRE PRODUCTS BE LIABLE, IN CONTRACT, TORT, STRICT LIABILITY OR UNDER ANY OTHER LEGAL THEORY, FOR INCIDENTAL, INDIRECT, SPECIAL OR CONSEQUENTIAL DAMAGES, INCLUDING BUT NOT LIMITED TO LABOR CHARGES, REGARDLESS OF WHETHER TYCO FIRE PRODUCTS WAS INFORMED ABOUT THE POSSIBILITY OF SUCH DAMAGES, AND IN NO EVENT SHALL TYCO FIRE PRODUCTS' LIABILITY EXCEED AN AMOUNT EQUAL TO THE SALES PRICE.

THE FOREGOING WARRANTY IS MADE IN LIEU OF ANY AND ALL OTHER WARRANTIES EXPRESS OR IMPLIED, INCLUDING WARRANTIES OF MERCHANTABILITY AND FITNESS FOR A PARTICULAR PURPOSE.

Figure 730 Mechanical Outlet Tee and Cross (Threaded)

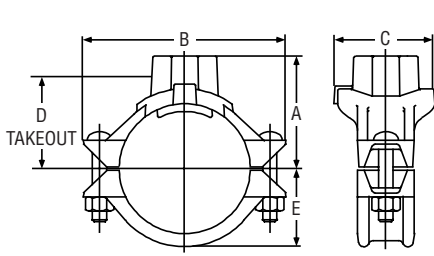


Figure 730 Mechanical Outlet Tee
(Threaded)

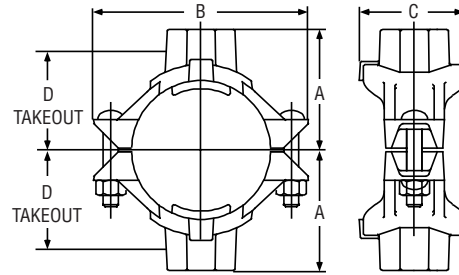


Figure 730 Mechanical Outlet Cross
(Threaded)

Nom. Size	Hole Dia. ‡		Dimensions					Net Wt. Lbs. Kg.
	Hole Inches mm	Max. Inches mm	A Inches mm	B Inches mm	C Inches mm	D Inches mm	E Inches mm	
2" x 1/2", 3/4", 1"	1.50	1.63	2.62	4.88	3.07	2.12	1.59	2.2
	38.1	41.3	66.5	124.0	78.0	53.8	40.4	1.0
2" x 1 1/4"	1.75	1.88	2.78	4.88	3.32	1.93	1.59	2.5
	44.5	47.6	70.6	124.0	84.3	49.0	40.4	1.1
2" x 1 1/2"	1.75	1.88	2.62	4.88	3.32	1.93	1.59	2.5
	44.5	47.6	66.5	124.0	84.3	49.0	40.4	1.1
2 1/2" x 1/2", 3/4", 1"	1.50	1.63	2.88	5.25	3.07	2.38	1.81	2.7
	38.1	41.3	73.2	133.4	78.0	60.5	46.0	1.2
2 1/2" x 1 1/4"	2.00	2.13	3.00	5.25	3.56	2.19	1.81	3.1
	50.8	54.0	76.2	133.4	90.4	55.6	46.0	1.4
2 1/2" x 1 1/2"	2.00	2.13	3.07	5.25	3.59	2.17	1.81	3.3
	50.8	54.0	78.0	133.4	91.2	55.1	46.0	1.5
3" x 1/2", 3/4", 1"	1.50	1.63	3.19	6.13	3.07	2.56	2.21	3.7
	38.1	41.3	81.0	155.7	78.0	65.0	56.1	1.7
3" x 1 1/4"	1.75*	1.88	3.34	6.13	3.32	2.50	2.21	3.9
	44.5	47.6	84.8	155.7	84.3	63.5	56.1	1.8
3" x 1 1/2"	2.00	2.13	3.38	6.13	3.56	2.48	2.21	4.2
	50.8	54.0	85.9	155.7	90.4	63.0	56.1	1.9
3" x 2"	2.50	2.63	3.50	6.13	4.09	2.75	2.21	4.7
	63.5	66.7	88.9	155.7	103.9	69.9	56.1	2.1
4" x 1/2", 3/4", 1"	1.50	1.63	3.69	7.13	3.07	3.06	2.78	5.5
	38.1	41.3	93.7	181.1	78.0	77.7	70.6	2.5
4" x 1 1/4"	1.75*	1.88	3.92	7.13	3.32	3.00	2.78	5.5
	44.5	47.6	99.6	181.1	84.3	76.2	70.6	2.5
4" x 1 1/2"	2.00	2.13	4.00	7.13	3.56	2.98	2.78	5.5
	50.8	54.0	101.6	181.1	90.4	75.7	70.6	2.5
4" x 2"	2.50	2.63	4.00	7.13	4.06	3.25	2.78	6.0
	63.5	66.7	101.6	181.1	103.1	82.6	70.6	2.7
4" x 2 1/2"	2.75	2.88	4.00	7.13	4.38	3.12	2.78	6.0
	69.9	73.0	101.6	181.1	111.3	79.2	70.6	2.7
4" x 76.1mm	2.75	2.88	4.00	7.13	4.38	3.12	2.78	6.0
	69.9	73.0	101.6	181.1	111.3	79.2	70.6	2.7
4" x 3"	3.50	3.63	4.13	7.13	5.13	3.31	2.78	7.0
	88.9	92.1	104.9	181.1	130.3	84.1	70.6	3.2

* - Hole size for 3" x 1 1/4" and 4" x 1 1/4" changed from 2" previously on Figure 720.

Figure 730 Mechanical Outlet Tee and Cross (Threaded)

Nom. Size Run x Branch	Hole Dia. ‡		Dimensions					Net Wt. Lbs. Kg.
	Hole Inches <i>mm</i>	Max. Inches <i>mm</i>	A Inches <i>mm</i>	B Inches <i>mm</i>	C Inches <i>mm</i>	D Inches <i>mm</i>	E Inches <i>mm</i>	
5" x 1½"	2.00 <i>50.8</i>	2.13 <i>54.0</i>	4.63 <i>117.6</i>	8.13 <i>206.5</i>	3.56 <i>90.4</i>	4.00 <i>101.6</i>	3.37 <i>85.6</i>	6.5 <i>2.9</i>
5" x 2"	2.50 <i>63.5</i>	2.63 <i>66.7</i>	4.63 <i>117.6</i>	8.13 <i>206.5</i>	4.06 <i>103.1</i>	3.88 <i>98.6</i>	3.37 <i>85.6</i>	7.1 <i>3.2</i>
5" x 2½"	2.75 <i>69.9</i>	2.88 <i>73.0</i>	4.75 <i>120.7</i>	8.13 <i>206.5</i>	4.38 <i>111.3</i>	3.88 <i>98.6</i>	3.37 <i>85.6</i>	7.3 <i>3.3</i>
5" x 76.1mm	2.75 <i>69.9</i>	2.88 <i>73.0</i>	4.75 <i>120.7</i>	8.13 <i>206.5</i>	4.38 <i>111.3</i>	3.88 <i>98.6</i>	3.37 <i>85.6</i>	7.3 <i>3.3</i>
5" x 3"	3.50 <i>88.9</i>	3.63 <i>92.1</i>	5.00 <i>127.0</i>	8.13 <i>206.5</i>	5.13 <i>130.3</i>	4.06 <i>103.1</i>	3.37 <i>85.6</i>	7.6 <i>3.4</i>
6" x 1½"	2.00 <i>50.8</i>	2.13 <i>54.0</i>	5.13 <i>130.3</i>	9.25 <i>235.0</i>	3.56 <i>90.4</i>	4.04 <i>102.6</i>	3.90 <i>99.1</i>	7.4 <i>3.4</i>
6" x 2"	2.50 <i>50.8</i>	2.63 <i>66.7</i>	5.13 <i>130.3</i>	9.25 <i>235.0</i>	4.06 <i>103.1</i>	4.31 <i>109.5</i>	3.90 <i>99.1</i>	7.5 <i>3.4</i>
6" x 2½"	2.75 <i>69.9</i>	2.88 <i>73.0</i>	5.13 <i>130.3</i>	9.25 <i>235.0</i>	4.38 <i>111.3</i>	4.18 <i>106.2</i>	3.90 <i>99.1</i>	7.5 <i>3.4</i>
6" x 76.1mm	2.75 <i>69.9</i>	2.88 <i>73.0</i>	5.13 <i>130.3</i>	9.25 <i>235.0</i>	4.38 <i>111.3</i>	4.18 <i>106.2</i>	3.90 <i>99.1</i>	7.5 <i>3.4</i>
6" x 3"	3.50 <i>88.9</i>	3.63 <i>92.1</i>	5.50 <i>139.7</i>	9.25 <i>235.0</i>	5.13 <i>130.3</i>	4.37 <i>111.0</i>	3.90 <i>99.1</i>	9.5 <i>4.3</i>
6" x 4"	4.50 <i>114.3</i>	4.63 <i>117.5</i>	5.38 <i>136.7</i>	9.25 <i>235.0</i>	6.13 <i>155.7</i>	4.56 <i>115.8</i>	3.90 <i>99.1</i>	10.0 <i>4.5</i>
8" x 2½"	2.75 <i>69.9</i>	2.88 <i>73.0</i>	6.25 <i>158.8</i>	12.50 <i>317.5</i>	4.38 <i>111.3</i>	5.12 <i>130.0</i>	4.90 <i>124.5</i>	10.2 <i>4.6</i>
8" x 76.1mm	2.75 <i>69.9</i>	2.88 <i>73.0</i>	6.25 <i>158.8</i>	12.50 <i>317.5</i>	4.38 <i>111.3</i>	5.12 <i>130.0</i>	4.90 <i>124.5</i>	10.2 <i>4.6</i>
8" x 3"	3.50 <i>88.9</i>	3.63 <i>92.1</i>	6.50 <i>165.1</i>	12.50 <i>317.5</i>	5.13 <i>130.3</i>	5.37 <i>136.4</i>	4.90 <i>124.5</i>	12.5 <i>5.7</i>
8" x 4"	4.50 <i>114.3</i>	4.63 <i>117.5</i>	6.38 <i>162.1</i>	12.50 <i>317.5</i>	6.13 <i>155.7</i>	5.56 <i>141.2</i>	4.90 <i>124.5</i>	12.5 <i>5.7</i>

‡ Proper hole preparation is required for effective sealing and performance. Check the pipe seal surface within 5/8" of the hole to be certain it is free from conditions which would affect proper gasket sealing. Remove any sharp or rough edges from the hole or upper housing contact area, which might affect assembly, proper seating of the locating collar or flow from the outlet. Check gasket grade to be certain it is suitable for the service. For crosses, ensure double outlet holes are aligned on opposite sides of the pipe. The use of threaded products other than steel pipe, such as dry pendants, etc. may not be compatible with the female threaded outlet on the Mechanical Tee. Always confirm compatibility by contacting Tyco Fire Products.

Note: Outlet threads conforming to BSP are available, contact Tyco Fire Products for details.

Figure 730 Mechanical Outlet Tee and Cross (Grooved)

Figure 730
Mechanical Outlet
Grooved Cross

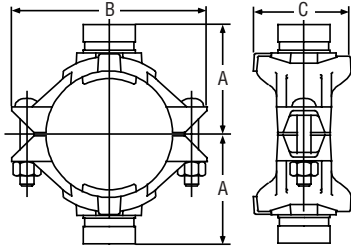
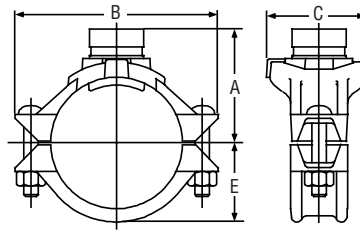


Figure 730
Mechanical Outlet
Grooved Tee



Nom. Size	Hole Dia. ‡		Dimensions				Net Wt. Lbs. Kg.
	Inches	Max. Inches	A Inches	B Inches	C Inches	E Inches	
2" x 1 1/4"	1.75 44.5	1.88 47.6	2.78 70.6	4.88 124.0	3.32 84.3	1.59 40.4	2.5 1.1
2" x 1 1/2"	1.75 44.5	1.88 47.6	2.62 66.5	4.88 124.0	3.32 84.3	1.59 40.4	2.5 1.1
2 1/2" x 1 1/4"	2.00 50.8	2.13 54.0	3.00 76.2	5.25 133.4	3.56 90.4	1.81 46.0	3.1 1.4
2 1/2" x 1 1/2"	2.00 50.8	2.13 54.0	3.07 78.0	5.25 133.4	3.59 91.2	1.81 46.0	3.3 1.5
3" x 1 1/4"	1.75* 44.5	1.88 47.6	3.34 84.8	6.13 155.7	3.32 84.3	2.21 56.1	3.9 1.8
3" x 1 1/2"	2.00 50.8	2.13 54.0	3.38 85.9	6.13 155.7	3.56 90.4	2.21 56.1	4.2 1.9
3" x 2"	2.50 63.5	2.63 66.7	3.50 88.9	6.13 155.7	4.09 103.9	2.21 56.1	4.7 2.1
4" x 1 1/4"	1.75* 44.5	1.88 47.6	3.92 99.6	7.13 181.1	3.32 84.3	2.78 70.6	5.5 2.5
4" x 1 1/2"	2.00 50.8	2.13 54.0	4.00 101.6	7.13 181.1	3.56 90.4	2.78 70.6	5.5 2.5
4" x 2"	2.50 63.5	2.63 66.7	4.00 101.6	7.13 181.1	4.06 103.1	2.78 70.6	6.0 2.7
4" x 2 1/2"	2.75 69.9	2.88 73.0	4.00 101.6	7.13 181.1	4.38 111.3	2.78 70.6	6.0 2.7
4" x 76.1mm	2.75 69.9	2.88 73.0	4.00 101.6	7.13 181.1	4.38 111.3	2.78 70.6	6.0 2.7
4" x 3"	3.50 88.9	3.63 92.1	4.13 104.9	7.13 181.1	5.13 130.3	2.78 70.6	7.0 3.2
5" x 1 1/2"	2.00 50.8	2.13 54.0	4.63 117.6	8.13 206.5	3.56 90.4	3.37 85.6	6.5 2.9

Nom. Size	Hole Dia.		‡ Dimensions				Net Wt. Lbs. Kg.
	Inches	Max. Inches	A Inches	B Inches	C Inches	E Inches	
5" x 2"	2.50 63.5	2.63 66.7	4.63 117.6	8.13 206.5	4.06 103.1	3.37 85.6	7.1 3.2
5" x 2 1/2"	2.75 69.9	2.88 73.0	4.75 120.7	8.13 206.5	4.38 111.3	3.37 85.6	7.3 3.3
5" x 76.1mm	2.75 69.9	2.88 73.0	4.75 120.7	8.13 206.5	4.38 111.3	3.37 85.6	7.3 3.3
5" x 3"	3.50 88.9	3.63 92.1	5.00 127.0	8.13 206.5	5.13 130.3	3.37 85.6	7.6 3.4
6" x 1 1/2"	2.00 50.8	2.13 54.0	5.13 130.3	9.25 235.0	3.56 90.4	3.90 99.1	7.4 3.4
6" x 2"	2.50 63.5	2.63 66.7	5.13 130.3	9.25 235.0	4.06 103.1	3.90 99.1	7.5 3.4
6" x 2 1/2"	2.75 69.9	2.88 73.0	5.13 130.3	9.25 235.0	4.38 111.3	3.90 99.1	7.5 3.4
6" x 76.1mm	2.75 69.9	2.88 73.0	5.13 130.3	9.25 235.0	4.38 111.3	3.90 99.1	7.5 3.4
6" x 3"	3.50 88.9	3.63 92.1	5.50 139.7	9.25 235.0	5.13 130.3	3.90 99.1	9.5 4.3
6" x 4"	4.50 114.3	4.63 117.5	5.38 136.7	9.25 235.0	6.13 155.7	3.90 99.1	10.0 4.5
8" x 2 1/2"	2.75 69.9	2.88 73.0	6.25 158.8	12.50 317.5	4.38 111.3	4.90 124.5	10.2 4.6
8" x 76.1mm	2.75 69.9	2.88 73.0	6.25 158.8	12.50 317.5	4.38 111.3	4.90 124.5	10.2 4.6
8" x 3"	3.50 88.9	3.63 92.1	6.50 165.1	12.50 317.5	5.13 130.3	4.90 124.5	12.5 5.7
8" x 4"	4.50 114.3	4.63 117.5	6.38 162.1	12.50 317.5	6.13 155.7	4.90 124.5	12.5 5.7

‡ Proper hole preparation is required for effective sealing and performance. Check the pipe seal surface within 5/16" of the hole to be certain it is free from conditions which would affect proper gasket sealing. Remove any sharp or rough edges from the hole or upper housing contact area, which might affect assembly, proper seating of the locating collar or flow from the outlet. Check gasket grade to be certain it is suitable for the service. For crosses, ensure double outlet holes are aligned on opposite sides of the pipe. The use of threaded products other than steel pipe, such as dry pendants, etc. may not be compatible with the female threaded outlet on the Mechanical Tee. Always confirm compatibility by contacting Tyco Fire Products.
Note: Outlet threads conforming to BSP are available, contact Tyco Fire Products for details.

General Notes: It is the Designer's responsibility to select products suitable for the intended service and to ensure that pressure ratings and performance data is not exceeded. Always read and understand the installation instructions (IH-1000). Never remove any piping component nor correct or modify any piping deficiencies without first depressurizing and draining the system. Material and gasket selection should be verified to be compatible for the specific application.



Certified Company