

Forged Steel Flanges

Slip-on Type

Central Sprinkler Company
451 North Cannon Avenue, Lansdale, Pennsylvania 19446



Product Description

Central's Forged Steel Slip-on Flanges are manufactured strictly in accordance with ASTM-A105 requirements. All Forged Steel Slip-on Flanges are carefully machined and all dimensions conform to ANSI B16.5 Class 150, flat face.

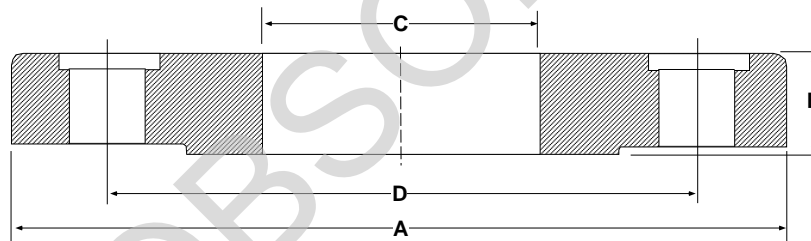
Being a welded slip-on flange, Central's Forged Steel Flange is ideally suited for use on flange and plain end pieces, making spool pieces, and joining plain end pipe of the same diameter.

Central also provides bolt and gasket kits, which are shrink-wrapped for convenience. All bolts are manufactured strictly in accordance with ASTM-A307, Class A requirements.

Forged Steel Flanges

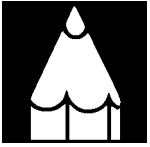
(Mfr. Source: Non-Domestic)

Design Note: Allow 1/8" (3.18 mm) take-out for each gasket used.



Dimensions — Weights

Nominal Pipe Size (in/mm)	Overall Dia. (A) (in/mm)	Flange Thick (B) (in/mm)	Bore Dia. (C) (in/mm)	BC Dia. (D) (in/mm)	Bolts		Approx. Net Wt. (lbs/kg)
					Number	Dia. x Length (in/mm)	
2½ 63.5	7 177.8	7/8" 22.3	2 ¹⁵ / ₁₆ " 74.6	5½" 139.7	4	5/8" x 3" 15.9 x 76.2	8 3.6
3" 76.2	7½" 190.5	15/16" 23.8	3 ⁹ / ₁₆ " 14.3	6 152.4	4	5/8" x 3¼" 15.9 x 82.6	9 4.1
4" 101.6	9 228.6	15/16" 23.8	4 ⁹ / ₁₆ " 115.9	7½" 190.5	8	5/8" x 3¼" 15.9 x 82.6	13 5.9
5" 127	10 254	15/16" 23.8	5 ²¹ / ₃₂ " 145.3	8½" 215.9	8	¾" x 3¼" 19.1 x 82.6	15 6.8
6" 152.4	11 279.4	1" 25.4	6 ²³ / ₃₂ " 170.7	9½" 355.6	8	¾" x 3½" 19.1 x 88.9	17 7.7
8" 203.2	13½" 342.9	1 1/8" 28.6	8 ²³ / ₃₂ " 221.5	11¾" 498.5	8	¾" x 3¾" 19.1 x 95.3	28 12.7
10" 254	16 406.4	1 3/16" 30.2	10 ⁷ / ₈ " 276.3	14¼" 362	12	7/8" x 4" 22.3 x 101.6	40 18.1



Ordering Information

Ordering Information: When placing an order, indicate the full product name. Please specify the quantity and model.

Availability and Service: Central sprinklers, valves, accessories, and other products are available throughout the U.S. and Canada; and internationally through a network of Central Sprinkler distribution centers. You may write directly to Central Sprinkler Company or call 215-362-0700 for the distributor nearest you.

Guarantee: Central Sprinkler Company will repair and/or replace

any products found to be defective in material or workmanship within a period of one year from the date of shipment. Please refer to the current Price List for further details of the warranty.

Patents: Patents are pending.

Conversion Table:

1 inch	= 25.400 mm
1 foot	= 0.3048 m
1 pound	= 0.4536 kg
1 foot pound	= 1.36 Nm
1 psi	= 6.895 kpa
	= 0.0689 bar
	= 0.0703 kg/cm ²
1 U.S. gallon	= 3.785 dm ³
	= 3.785 liters

Conversions are approximate.

OBSOLETE



Central Sprinkler Company

451 N. Cannon Avenue, Lansdale, PA 19446

Phone (215) 362-0700

FAX (215) 362-5385